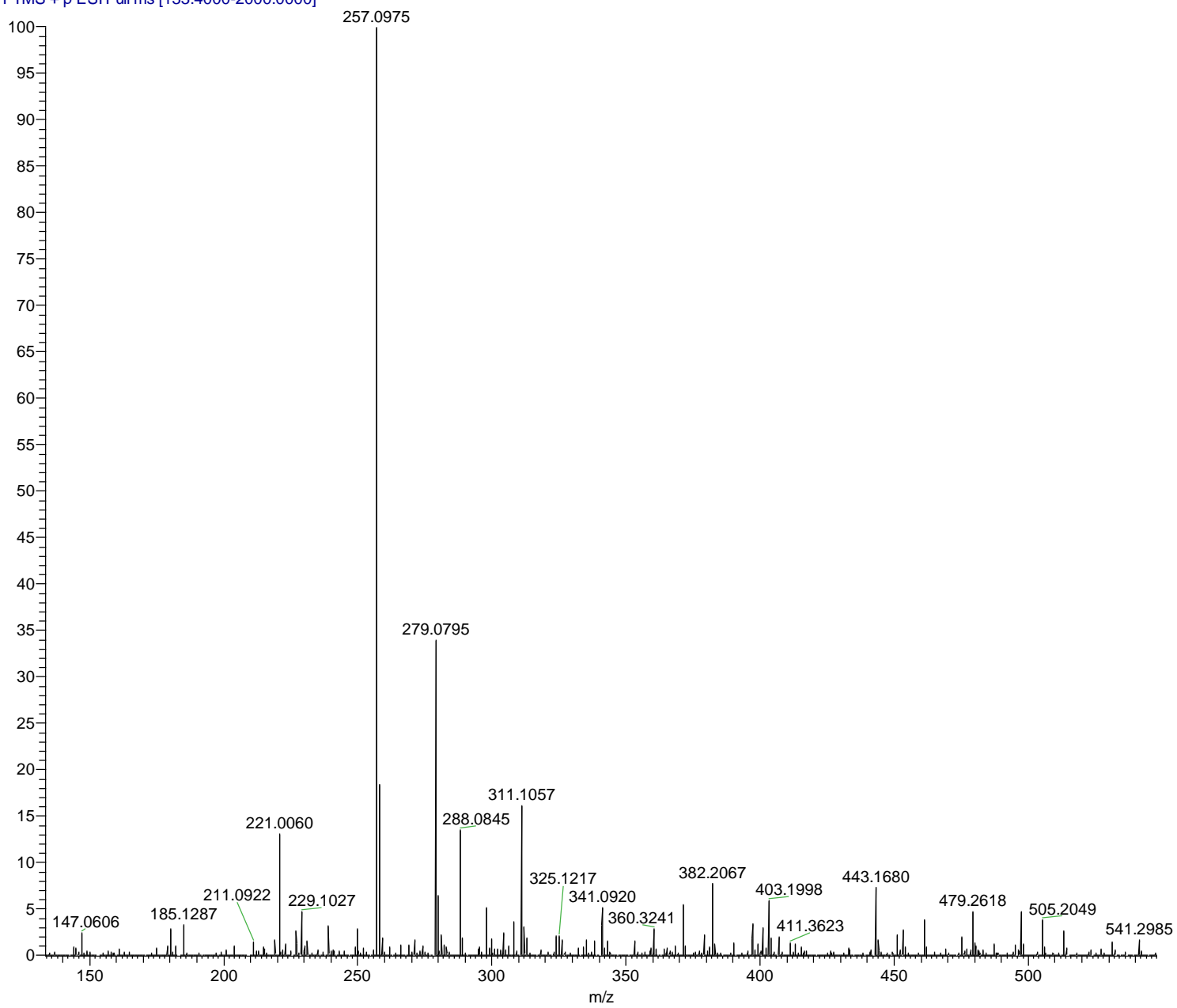


121223_ols2 184 #261 RT: 0.61 AV: 1 NL: 5.30E8
T: FTMS + p ESI Full ms [133.4000-2000.0000]



THEORETICAL MASS FOR $[M+H]^+ = 341.0654$

THEORETICAL MASS FOR $C_{16}H_{14}FO_2^+ = 257.0972$

FOUND MASS: 257.0975

ERROR (PPM): 0.27